

Annual Report of the

Gwich'in Land Use Planning Board



April 1, 2005 – March 31, 2006



ANNUAL REPORT OF THE GWICH'IN LAND USE PLANNING BOARD

APRIL 1, 2005 TO MARCH 31, 2006

Introduction

Nành Geenjit Gwitr'it T'igwaa'in, Working for the Land – the Gwich'in Land Use Plan was officially approved on August 7, 2003. The Planning Board was responsible for developing the land use plan and is now monitoring its implementation. It is very important for the Board to understand how the Plan is being implemented and how it is affecting land use in the Settlement Area. It is also very important that communities and other stakeholders in the region understand how the Plan is working because they have a continued role under the Plan to participate in decisions about development activities. The Board's annual report is our primary tool for tracking and communicating Plan implementation.

It was a busy year for the Board. Implementing the Plan included a preliminary review of the Mackenzie Gas Project applications for type A land use permits and water licence. Though the Plan has been approved for only a little more than two years, the Board has also been preparing for the comprehensive five year review of the Plan. We began this year by reviewing the previous year's completed research projects and then planned for the next steps in research and information gathering that needs to be done.

The contents of this report include:

- Board membership and staff updatepage 2
- highlights of the year's activities and issuespage 3
- the Planning Board's activity report for 2005-2006.....page 6
- the Planning Board's work plan for 2006-2007page 9
- a review of land use permits and water licences issued and an
explanation of how an approved Plan has affected those activitiespage 12
- a summary of any exceptionspage 12
- a map showing the general locations of the activities in the GSApage 16
- audited financial statements for 2005-2006.....page 17

Board and Staff Update

MEMBERS	NOMINATED BY	APPOINTED ON	(REAPPOINTED)
Bob Simpson, Chair	Board	August 23, 2002	September 26, 2005
Charlie Snowshoe, Vice-chair	GTC	December 22, 2001	February 22, 2005
Fanny Greenland	GNWT	March 14, 2002	April 25, 2005
Ian McLeod	GTC	December 22, 2001	February 22, 2005
Joseph Tetlich	Canada	March 15, 2005	<i>resigned Sept. 2005</i>

The Planning Board is a public board with the Minister of Indian and Northern Affairs responsible for appointing nominees. The Board has four members and a chairperson. The Gwich'in Tribal Council nominates two members and the Government of the Northwest Territories (GNWT) and Government of Canada each nominate one member. Together, the members nominate the Chair. Once appointed, each person represents the interests of the public, not the interests of the group that nominated him or her. All appointments are for a three-year term.

Fanny Greenland's reappointment was finalised in April. Bob Simpson was nominated for another term as chair of the Board and accepted.

Joseph Tetlich resigned from the Board in September 2005. Joseph found that with his commitment to his work and his role as chair of the Porcupine Caribou Management Board, he was not able to devote the time to the Planning Board he felt was necessary. The federal government has not appointed his replacement yet, so the Board has been doing its best to operate with this vacancy.

STAFF:

Planner: Susan McKenzie

Planning Assistant: Amy Wright

Susan has been with the Board since August 2001, and Amy has been with the Board since November 2004.

Highlights of Planning Board Activities and Issues

The Planning Board produced “Implementing the Gwich'in Land Use Plan: A Five year Work Plan” in December 2003 to guide the implementation of the Plan. The following highlights of the year is a record of progress by the Board of our responsibilities surrounding Plan implementation and our planning activities. In addition to our own planning work, the Board tracks the recommendations made to others who have a role in resource management issues that are important for Plan implementation.

The **Mackenzie Gas Project** (MGP) has been in the forefront of the Board's activities over the past year. This project with an estimated construction value of \$7 billion is clearly well beyond the scale and impact of any other project the Board has dealt with to date. In 2004-2005, consultants were hired to provide the Board with a report that reviewed the MGP Environmental Impact Statement. The final report was completed in May and the Board used it to adjust our work plan based on addressing the issues raised.

The need for **granular resources planning** was one of the issues highlighted in the MGP report. The Board had also identified it as a planning issue even without consideration of the MGP. Of the 35 active land use permits in the Gwich'in Settlement Area, 27 are related to granular resources. Consultants have been hired to provide some background information on best practices for granular resource pits and quarries. This information is expected in August 2006, and will be used to start discussions with the GTC, GNWT and DIAND on the best process for this planning activity.

The Board reviewed the research reports from 2004-05 early in this fiscal year. The Planning Board continued with our Research Plan this year with funding from outside sources. With financial assistance from the federal office for the NWT Protected Areas Strategy, we completed in draft form the phase two of the **cultural research in the Arctic Red River Headwaters** (the Gwich'in Social and Cultural Institute used existing sources and undertook new interviews). The final report is expected in July 2006.

These reports are a start at filling in some gaps in the information we need for more detailed planning, and setting up for the 5-year review of the Land Use Plan. If a need for primary research is identified in the reports, the Board will approach the government bodies that have a mandate for it to ask that they include it in their research programs.

Two conditions for the Plan approval need to be tracked over the next few years. The first was to do **non-renewable resource assessments** for all of the Conservation Zones, which was undertaken in 2003 by the NWT Geoscience Office (formerly the C.S. Lord Geoscience Centre). We received the Phase I assessment report in February 2005. While the second and final year of field work was completed August 2004, the NWT Geoscience Office has not produced any field assessment reports, which is behind schedule. The lack of non-renewable resource information could hamper our ability to update the Plan.

Also on Plan approval, the Minister of DIAND agreed it was necessary to change the **Canada Mining Regulations** so that they are ‘in agreement’ with the provisions in the Gwich'in Land Claim Agreement for Land Use Planning. We had expected to see a second draft of the revised regulations, but we have not seen anything new from DIAND on this item this fiscal year.

Although there is a **withdrawal of lands** from development within Conservation and Heritage Conservation Zones to allow the federal government time to amend the CMRs, this can only be a temporary measure. The Board hopes to see some real progress on this item in the upcoming year.

If it appears that the CMR changes might not be completed before the land withdrawal expires on January 31, 2008, there are some options for action. A decision needs to be made sooner rather than later on which option to take as there are issues of time involved. The options and considerations are:

- **Make the completion of the Canada Mining Regulation amendment a priority.** This is the best option as it fulfils the obligations of the federal government to implement all of the land use planning measures under the Gwich'in Land Claim. In practical terms, this means the planning partners will be able to make decisions regarding development and conservation without the burden of applying for, or amending, an Order in Council land withdrawal.
- **Renew land withdrawal as it is.** This will not allow the Plan to reflect any new information about the existing zones that might indicate the potential need for a reduction or addition to the areas covered under conservation zoning. Another reason that this is not an optimal solution is that it does not provide the option of using an amendment or exception to address subsurface resource issues in conservation zones during the term of the land withdrawal.
- **Apply for a revised land withdrawal.** This is dependant upon having enough information to make decisions, and whether the new information indicates the need to make changes of either increases or decreases to the conservation zoning. It will take time and additional funding to prepare a new application for the land withdrawal, which includes legal land descriptions. This solution also does not leave the option of using an amendment or exception to address subsurface resource issues in conservation zones during the term of the land withdrawal.
- **Let the land withdrawal lapse.** Should the choice be made by the Plan signatories to not use a land withdrawal if the CMRs are not amended, the Federal government will become liable and have to compensate prospectors for lost opportunities on any claims registered in the conservation/heritage conservation zones.

The Board will be working with the planning partners over the early part of the 2006/2007 fiscal year to decide on a course of action.

The Board worked with Peel Watershed Planning Commission as they began their planning work with the Tetlit Gwich'in. We also organized a joint community meeting in Aklavik in November to discuss Peel watershed issues as there are historical family connections to the Peel as well as the environmental ones. Ducks Unlimited provided assistance for this additional work as the organisation supports the management of the wetlands (waterfowl habitat) in the watershed that a land use plan can provide.

The support from Ducks Unlimited also paid for digital mapping work. This included looking at existing, common map data between the two territories so we have a single base for planning on both sides of the border. It also allowed us to fix the digital seasonal community land use mapping files from the Mackenzie Delta Beaufort Sea Land Use Planning Commissions work.

The Board's curriculum-based **Land Use Plan Classroom Guide** for Grades 4, 7, and 10 which was developed last year will be introduced to teachers of the region in October 2006 at a teachers conference. This package of materials will give teachers resources at their fingertips to introduce students to resource management using the example of the Gwich'in Plan. It is hoped that by providing a hands on session about the resource package at the conference, teachers will be more likely to use it.

Started to integrate GRRB reports into the Plan, through our ecological assessment contracts.

Items from the implementation strategy for the Plan that still need to be addressed in the next year are:

- Need to work on more detailed maps on website/website links, and appropriate brochures with information on the regulatory system with other Gwich'in Boards
- Need to develop a strategy for dealing with the effects of outside activities on resources in the Gwich'in Settlement Area.
- Need to have discussions with the GNWT department of Environment and Natural Resources (formerly RWED, now ENR) about the mobile caribou protection measures to see how or if they should be considered in the Land Use Plan.
- Need to meet with Aurora Research Institute and ENR concerning progress on identifying alternative energy sources that might be used or developed in the NWT.
- A plan for the clean up of abandoned and old pits should be developed by DIAND
- Need to work with others to review oil and gas resources of the Gwich'in Settlement Area to promote the economic well being of the Gwich'in
- Need to work with others to develop a "Code of Good Conduct" brochure/information for the disposal of garbage by all land users
- Need to continue to monitor status of Sahtu Land Use Plan (no revised draft available to comment on yet) so that transboundary planning discussions can be started when the Sahtu is ready.
- Need to initiate transboundary work with the Inuvialuit especially regarding the Mackenzie River delta ecosystem
- Need to have discussions with MACA regarding municipal planning overlap issues

The Board's activities for 2005-06, and work plan for 2006-07 are summarised in the following tables.

GWICH'IN LAND USE PLANNING BOARD ACTIVITY REPORT FOR 2005-2006

PLANNING PROCESS ACTIONS		Target	Status
1. Communications	<input type="checkbox"/> Update Implementation Strategy on website	July 2005	Complete
	<input type="checkbox"/> Update new minister of contact within the GNWT	Apr 2005	Complete
	<input type="checkbox"/> Gather information for annual report.....	Apr 2005	Complete
	<input type="checkbox"/> Draft annual report	May 2005	Complete
	<input type="checkbox"/> Publish Annual Report	June 2005	Complete
	<input type="checkbox"/> Produce pamphlet with GLWB and GLR on plan and the regulatory system.....	postponed	
	<input type="checkbox"/> Attend Inuvik Petroleum Show	June 2005	Complete
	<input type="checkbox"/> Distribute annual report.....	July 2005	Complete
	<input type="checkbox"/> Attend Gwich'in Annual Assembly.....	Aug 2005	Complete
	<input type="checkbox"/> Activities for promoting youth education.....	Ongoing	
	▪ resource materials tested in Aklavik and printed		Complete
	▪ funding to book project	Mar 2006	Complete
	<input type="checkbox"/> Produce a newsletter for the communities	Jan 2006	Complete
	<input type="checkbox"/> Community meetings Re: pipeline and 5 year review planning	Ongoing	Ongoing
2. Working With Others (Integrated Resource Management)	<input type="checkbox"/> Discuss joint communications projects with other Gwich'in co-management boards	June 2005	Postponed
	<input type="checkbox"/> Meeting with other Gwich'in Boards to share activity updates and have IRM discussion.....	Ongoing	Ongoing
	<input type="checkbox"/> Participation in the Gwich'in Integrated GIS Project (contributions paid in March)	Ongoing	Ongoing
3. Conditions leading to Land Use Plan Approval	<input type="checkbox"/> Update from C.S. Lord on NRR assessment; determine communications w/ communities.....	May 2005	Update: finishing reports
	<input type="checkbox"/> Review report from C.S. Lord Geoscience Centre on 2003 field work.....	Sept 2005	Waiting for final reports
	<input type="checkbox"/> Review report from C.S. Lord Geoscience Centre on 2004 field work.....	Feb 2006	reports
	<input type="checkbox"/> Monitor changes to Canada Mining Regulations	Ongoing	Fall 2006?
4. Conformity Process	<input type="checkbox"/> Regulatory Authorities (RAs) do the initial conformity check, unless the activity is referred to the Board. The Board must be on all RAs referral lists and will monitor the decisions made on conformance with the Plan	Ongoing	Ongoing
	<input type="checkbox"/> Monitoring of terms and conditions applied by RAs to licences, permits, and other authorizations and the developers ability to meet them.....	Ongoing	Ongoing
	<input type="checkbox"/> Reviewing and making decisions on applications for amendments and exceptions to the Plan	Ongoing	MGP
5. Continued Information Gathering	<input type="checkbox"/> Cumulative Impacts Monitoring Program information/Air and Water Quality.....	April 2005	Not complete
	<input type="checkbox"/> Review research results	May 2005	Complete
	<input type="checkbox"/> Develop next steps draft research plan	May 2005	Complete
	<input type="checkbox"/> Addition of new information to Plan.....	Ongoing	Ongoing
6. 5-Year Review	<input type="checkbox"/> Issues will emerge over the next five years that will need to be addressed in the 5-year review. These will be tracked in the Annual Report.....	Ongoing	Ongoing

ISSUES-RELATED ACTIONS

1. Community Involvement	<input type="checkbox"/> Community involvement has been key to the planning process and ongoing and continuous community involvement is critical to the successful implementation of the Plan. Individual activities that have direct community involvement are described under the other sections	Ongoing	Ongoing
2. Economic Development	<input type="checkbox"/> The Board will be working with community, Gwich'in, and government groups over the next five years to assess economic opportunities	Ongoing	Ongoing
3. Gwich'in Heritage Resources	<input type="checkbox"/> The Planning Board shall consider recommendations by the Gwich'in Social and Cultural Institute for the addition of heritage areas to the Gwich'in Conservation Zones or Gwich'in Special Management Zones during the life of the Plan <input type="checkbox"/> Discuss management issues of existing HCZ with GSCI	Ongoing Ongoing	
4. Water and Air Resources	<input type="checkbox"/> Commence drafting TOR for strategy for dealing with the effects of outside activities on resources in the Gwich'in Settlement Area <input type="checkbox"/> Review status report on water quality and air quality	Jan 2006 Mar 2006	Postponed Postponed-July 06
5. Renewable Resources	<input type="checkbox"/> Workshop for review of Special Management Zones with stakeholders	Sept 2005	Postponed - 2007
6. Non-renewable Resources Development	<input type="checkbox"/> Best practices study for pit development	Ongoing	Started March 06 (Finish Aug 06)
7. Pollution and Waste Management	<input type="checkbox"/>		
8. Transportation, Utilities and Communication	<input type="checkbox"/> Legal review / advice on Draft wording for exception and amendment	Mar 2006	
9. Tourism and Recreation	<input type="checkbox"/> The Planning Board will provide assistance to the GTC to produce a management plan that addresses the commercial tourism potential for the Campbell Hills area. The GTC may act on this issue at any time within the life of the Plan	Ongoing	
10. Transboundary Areas	<input type="checkbox"/> Meet with Peel River Planning Commission and Tetlit Gwich'in on role of Planning Board with respect to the Peel River Watershed regional land use planning process <input type="checkbox"/> Review revised draft Sahtu Land Use Plan <input type="checkbox"/> Finalize input into the detailed terms of reference for the Peel River Watershed regional land use plan	Dec 2005 Ongoing Oct 2005	Complete Waiting for draft Complete
11. Legislated Protected Areas	<input type="checkbox"/> Phase II Arctic Red River Headwaters Cultural Assessment <input type="checkbox"/> Draft terms of reference with PAS Secretariat for review of ecoregion and rare species	Mar 2006	Expected 07/06

	representation	May 2005	Postponed
<input type="checkbox"/>	Discussions with partners on potential joint Arctic Red River Headwaters research.....	May 2005	Ongoing
BOARD ADMINISTRATION			
<input type="checkbox"/>	Budgeting/Work planning/notification of Auditor	Mid Feb	Complete
<input type="checkbox"/>	Audit/year-end report	June 30 th	Complete
<input type="checkbox"/>	Midterm report.....	Nov. 1 st	Complete
<input type="checkbox"/>	Access To Information and Privacy Act Reporting	Ongoing	Ongoing
<input type="checkbox"/>	Board meetings (including organization, minute taking, etc.).....	Ongoing	Ongoing
<input type="checkbox"/>	Professional Development	Apr/May	Complete
<input type="checkbox"/>	Day to day operations (accounting, answering phones, filing, etc).....	Ongoing	Ongoing
<input type="checkbox"/>	New office equipment	Feb 2006	Desk

GWICH'IN LAND USE PLANNING BOARD WORKPLAN FOR 2006-2007

PLANNING PROCESS ACTIONS		Target
7. Communications	<input type="checkbox"/> Update Implementation Strategy on website.....	April 2006
	<input type="checkbox"/> Gather information for annual report	Apr 2006
	<input type="checkbox"/> Draft annual report	May 2006
	<input type="checkbox"/> Publish/Distribute Annual Report	June 2006
	<input type="checkbox"/> Assess interest in joint pamphlet with GLWB and GLR on plan and the regulatory system.....	Ongoing
	<input type="checkbox"/> Attend Inuvik Petroleum Show	June 2006
	<input type="checkbox"/> Website upgrade to include more detailed maps	Sept 2006
	<input type="checkbox"/> Attend Gwich'in Annual Assembly	Aug 2006
	<input type="checkbox"/> Produce a newsletter for the communities.....	Aug 2006
	<input type="checkbox"/> Attend NWT Geoscience Forum.....	Nov 2006
	<input type="checkbox"/> Produce a newsletter for the communities.....	Jan 2007
	<input type="checkbox"/> Youth education materials package in-servicing as required	Ongoing
8. Working With Others (Integrated Resource Management)	<input type="checkbox"/> Discuss joint communications projects with other Gwich'in co-management boards.....	June 2006
	<input type="checkbox"/> Meeting with other Gwich'in Boards to share activity updates and have IRM discussion.....	Jan 2007
	<input type="checkbox"/> Continued participation in NWT Board's Forum	Sept 2006
	<input type="checkbox"/> Participation in the Gwich'in Integrated GIS Project (contributions paid in March)	Ongoing
9. Conditions leading to Land Use Plan Approval	<input type="checkbox"/> Update from NWT Geoscience office on NRR assessment; determine communications w/ communities	May 2006
	<input type="checkbox"/> Review report from C.S. Lord Geoscience Centre on 2004 field work	Apr 2006
	<input type="checkbox"/> Monitor changes to Canada Mining Regulations (legal review)	Ongoing
10. Conformity Process	<input type="checkbox"/> Regulatory Authorities (RAs) do the initial conformity check, unless the activity is referred to the Board. The Board must be on all RAs referral lists and will monitor the decisions made on conformance with the Plan	Ongoing
	<input type="checkbox"/> Monitoring of terms and conditions applied by RAs to licences, permits, and other authorizations and the developers ability to meet them	Ongoing
	<input type="checkbox"/> Reviewing and making decisions on applications for amendments and exceptions to the Plan	Ongoing
	<input type="checkbox"/> Attendance at MGP regulatory hearings (JRP and NEB)	Sept 2006
	<input type="checkbox"/> Attendance at MGP regulatory hearings (JRP and NEB)	Oct 2006
	<input type="checkbox"/> Attendance at MGP regulatory hearings (JRP and NEB)	Nov 2006
	<input type="checkbox"/> Regional meeting to discuss Amendment/Exception to Plan (MGP applications)	Feb 2007

11. Continued Information Gathering	<input type="checkbox"/> Review Cumulative Impacts Monitoring Program information (air & water quality, etc)	April 2006
	<input type="checkbox"/> Review Environmental Audit results (MVRMA part 6)	Nov 2006
	<input type="checkbox"/> Meeting with data holders (includes participation in Spatial Land Use Data sharing project) ..	May 2006
	<input type="checkbox"/> Review of permafrost information	Aug 2006
	<input type="checkbox"/> Addition of new information to Plan.....	Ongoing
12. 5-Year Review	<input type="checkbox"/> Issues will emerge over the next five years that will need to be addressed in the 5-year review. These will be tracked in the Annual Report	Ongoing
	<input type="checkbox"/> Produce a summary report of progress on Plan implementation issues (part of determining process for 5yr review).....	May 2006
ISSUES-RELATED ACTIONS		
12. Community Involvement	<input type="checkbox"/> Community involvement has been key to the planning process and ongoing and continuous community involvement is critical to the successful implementation of the Plan. Individual activities that have direct community involvement are described under the other sections	Ongoing
13. Economic Development	<input type="checkbox"/> The Board will be working with community, Gwich'in, and government groups over the next 5 years to assess economic opportunities	Ongoing
	<input type="checkbox"/> Keep informed of GTC evaluations action on economic measures section of Claim	Ongoing
14. Gwich'in Heritage Resources	<input type="checkbox"/> The Planning Board shall consider recommendations by the Gwich'in Social and Cultural Institute for the addition of heritage areas to the Gwich'in Conservation Zones or Gwich'in Special Management Zones during the life of the Plan.....	Ongoing
	<input type="checkbox"/> Discuss management issues of existing HCZ with GSCI.....	Ongoing
15. Water and Air Resources	<input type="checkbox"/> Commence TOR for strategy for dealing with the effects of outside activities on resources in the Gwich'in Settlement Area	Jan 2007
	<input type="checkbox"/> Review status report on water quality and air quality	Feb 2007
16. Renewable Resources	<input type="checkbox"/> Review of Special Management Zones Report	Sept 2006
	<input type="checkbox"/> Produce maps of renewable resource potential (with GTC, GRRB, ENR, etc)	Mar 2007
	<input type="checkbox"/> Compile and integrate management plans/studies into Land Use Plan.....	Ongoing
17. Non-renewable Resources Development	<input type="checkbox"/> Review Best practices study report on quarry/gravel pit development.....	Ongoing
	<input type="checkbox"/> Produce maps of non-renewable resource potential (with GTC, GRRB, ENR, etc).....	Mar 2007
18. Pollution and Waste Management	<input type="checkbox"/> Undertake research on existing policy regarding Code of Good Conduct for Garbage Disposal.....	Ongoing
19. Transportation, Utilities and Communication	<input type="checkbox"/> More detailed planning along the Dempster	Ongoing

20. Tourism and Recreation	<input type="checkbox"/> The Planning Board will provide assistance to the GTC to produce a management plan that addresses the commercial tourism potential for the Campbell Hills area. The GTC may act on this issue at any time within the life of the Plan.....	Ongoing
21. Transboundary Areas	<input type="checkbox"/> Meet with Peel River Planning Commission and Tetlit Gwich'in with respect to the Peel River Watershed regional land use planning process..... <input type="checkbox"/> Contact North Yukon Planning Commission..... <input type="checkbox"/> Review revised draft Sahtu Land Use Plan <input type="checkbox"/> Mackenzie Delta planning..... <input type="checkbox"/> Contact MACA for community plan status (look at hinterland issues, etc).....	Ongoing Ongoing Ongoing Ongoing Sep 2006
22. Legislated Protected Areas	<input type="checkbox"/> Work with PAS to evaluate ecological representation in the GSA	Ongoing
BOARD ADMINISTRATION		
	<input type="checkbox"/> Budgeting/Work planning/notification of Auditor..... <input type="checkbox"/> Audit/year-end report <input type="checkbox"/> Midterm report <input type="checkbox"/> Access To Information and Privacy Acts Reporting <input type="checkbox"/> Board meetings (including organization, minute taking, etc.) <input type="checkbox"/> Professional Development..... <input type="checkbox"/> Day to day operations (accounting, answering phones, filing, etc)..... <input type="checkbox"/> Review of Board Policy and Procedures documents (legal) <input type="checkbox"/> Evaluate annual report against other organisations annual reports (measure effectiveness).....	Mid Feb June 30 th Nov. 1 st Ongoing Ongoing Apr&Jun Ongoing May 2006 May 2006

Land Use Permits, Water Licences, Other Authorizations

All regulatory agencies have to ensure that all licensed, permitted, and other authorized activities related to the use of land, water, and the deposit of waste conform with the Plan. In working with the regulatory agencies, the Planning Board has updated our 'best practices' steps to monitoring conformance decisions. While we have met with most regulatory authorities, significantly we have yet to meet with the Department of Fisheries and Oceans and the Mackenzie Valley Environmental Impact Review Board.

Foremost is our work with the Gwich'in Land and Water Board (GLWB). Most regulatory authorisations for activities in the GSA are issued by the GLWB (land use permits and water licences). Conditions from the Plan have been placed on permits and licences for activities in Special Management Zones. However, we believe some of the conditions are not enforceable because of the way they are written. Hence, we are intending to review these permits to see if they are effective and enforceable from a legal perspective. We have begun a regulatory review of the conditions for effectiveness and enforceability, and have some preliminary recommendations.

The summary of authorisations that follows is new applications handled by regulatory agencies between April 1, 2005 and March 31, 2006. It does not include all active authorisations so shouldn't be used as a snapshot of all activity during the year. For example, the GLWB dealt with 10 new applications in 2004-05. There is approximately the same number of permits/licences that were issued prior to April 1, 2004 that are still active. Although the Board looks at all past and present land uses when planning, the focus of this report is only new authorisations for the past year to monitor how the current Plan is working.

Plan Exceptions

The Land Use Planning process allows for applications for exceptions or amendments to the Land Use Plan. If a developer is not in conformance with either a Conservation Zone or conditions in a Special Management Zone, they can ask the Board for an exception or an amendment to the Plan. Exceptions are only for temporary work, and require only Board approval. Amendments are required for permanent works, and require all signatories to approve.

The Board received an application from the MGP for exceptions and an amendment that will be required before the Pipeline project can receive all the regulatory approvals necessary for construction. We expect to handle these applications within the regulatory process timeframe which is likely to be a matter of many months.

Following is a table of activities in the GSA that were authorized during the timeframe of this report. The map shows where each of the activities took place. With each activity is a brief description of what conditions from the Plan have been placed on those activities. Refused activities are also listed.

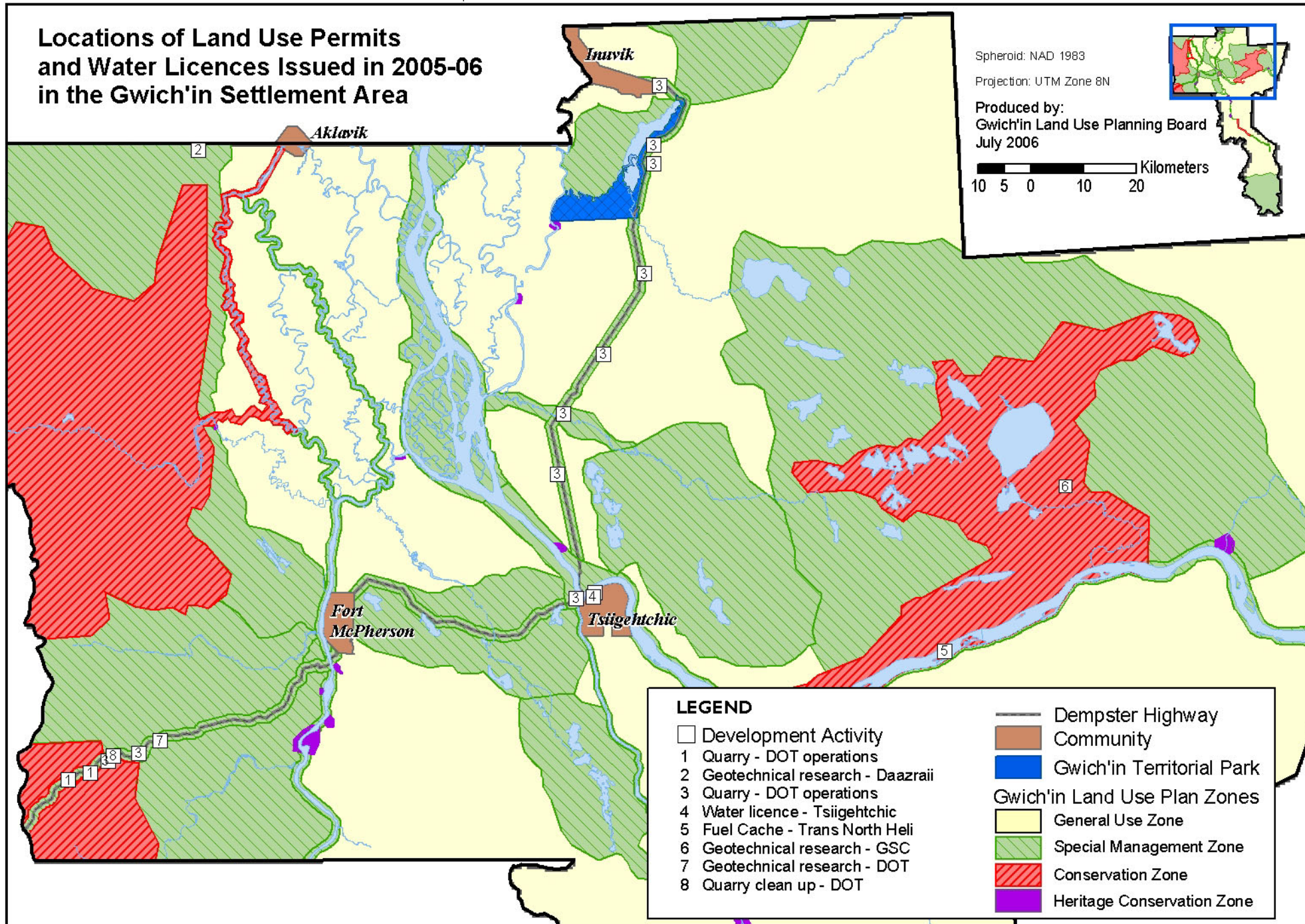
Note: the following table and map are produced with information obtained from the regulatory authority listed. For more information on an activity or to verify details, please contact the appropriate authority.

File Number	Regulatory Authority	Applicant	Operation	Location	Plan Zones	Comments
G05Q02	GTC	Daazraii Investments Inc	Quarrying: Gravel extraction	Willow River, Source 467	Porcupine Caribou Special Management Zone	RA must include Plan Conditions for Porcupine Caribou
G05Q03	GTC	Mackenzie Valley Construction Ltd.	Quarrying: Gravel extraction	Frog Creek (KM 126)	Frog Creek Special Management Zone	RA conditions must include Plan conditions for Waterfowl, Fish, and Heritage
G05Q04	GTC	Mackenzie Valley Construction Ltd	Quarrying: Gravel extraction	Frog Creek (KM 126)	Frog Creek Special Management Zone	RA conditions must include Plan conditions for Waterfowl, Fish, and Heritage
G05R06	GTC	Geological Survey of Canada	Research	20 km east of Travaillant Lake	Lakes Around Travaillant Lake Special Management Zone	RA conditions must include Plan conditions for Fish and Heritage
G05Q07	GTC	Northwestel Inc.	Quarrying: Haul 800 m ³ to tower site near Deep Water Lake	Frog Creek Pit (KM 126)	Frog Creek Special Management Zone	RA conditions must include Plan conditions for Waterfowl, Fish, and Heritage
G05R01	GTC	AMEC Americas Ltd.	Research: assess creek crossings along pipeline corridor various seasons.	Pipeline Corridor	Multiple zones	RA must include Plan conditions
G05R05	GTC	AMEC Americas Ltd.	Research: Aquatic and terrestrial resource investigations	Pipeline Corridor	Multiple zones	RA must include Plan conditions
G05R08	GTC	Imperial Oil Resources Ventures Ltd.	Research: river break-up conditions in the spring	Pipeline Corridor	Multiple zones	RA must include Plan conditions
G05R09	GTC	AMEC Americas Ltd.	Research: conduct studies at known or suspected heritage sites	Pipeline Corridor	Multiple zones	RA must include Plan conditions
G05R10	GTC	Diamondex Resources Ltd.	Research: exploration through geophysical surveys	Parcel 17 east of Travaillant Lake.	General Use Zone, Lakes Around Travaillant Lake Special Management Zone	RA conditions must include Plan conditions for Fish and Heritage
G05R11	GTC	Diamondex Resources Ltd.	Research: exploration through geophysical surveys, sampling with auger	Lena West Prospecting Permits Area	General Use Zone, Lakes Around Travaillant Lake Special Management Zone	RA conditions must include Plan conditions for Fish and Heritage

File Number	Regulatory Authority	Applicant	Operation	Location	Plan Zones	Comments
G05Q12	GTC	L.J.'s Contracting Ltd.	Quarrying	Frog Creek Pit (KM 126)	Frog Creek Special Management Zone	RA conditions must include Plan conditions for Waterfowl, Fish, and Heritage
G05L13	GTC	Nihtat Gwich'in Council	Explosives Storage	KM 251 Campbell Lake	Transportation Special Management Zone	RA conditions must include Plan conditions for Tourism and Raptors
GTC06R01	GTC	NWT Geoscience Office	Research	Arctic Red River	Tsiigehtjick (Arctic Red River) Special Management Zone	RA must include Plan conditions for Fish and Heritage
GTC06NC07	GTC	Gwich'in Owned Lands	Residential Campsite	Dolomite (Airport) Lake	General Use Zone	Only Regulatory Authority Conditions apply
GTC06E08	GTC	Aurora College	Moose Hide Tanning course	Lucy Adams Campsite	General Use Zone	Only Regulatory Authority Conditions apply
GTC06R09	GTC	Diamondex Resources Ltd	Diamond exploration	Lena West	General Use Zone and Lakes around Travaillant Special Management Zone	RA conditions must include Plan conditions for Fish and Heritage
GTC06Q10	GTC	Mackenzie Valley Construction Ltd.	Quarrying: Gravel extraction	Frog Creek Pit (KM 126)	Frog Creek Special Management Zone	RA conditions must include Plan conditions for Waterfowl, Fish, and Heritage
GTC06R03	GTC	Gwich'in Renewable Resource Board	GRRB's fish and wildlife research	Various locations	Multiple zones	RA must include Plan conditions
GTC06Q04	GTC	Mackenzie Valley Construction Ltd.	Quarrying: Gravel extraction	Midway Lake pit Dempster highway	Transportation Special Management Zone	RA conditions must include conditions for Porcupine Caribou and Tourism
G05Q004	GLWB	Department of Transportation - GNWT	Q. Quarrying	Dempster, km 13.2 & 18.4 - km 13.2	Transportation Special Management Zone	RA conditions must include conditions for Porcupine Caribou and Tourism
G05Q004-b	GLWB	Department of Transportation - GNWT	Q. Quarrying	Dempster, km 13.2 & 18.4 - km 18.4	Transportation Special Management Zone	RA conditions must include conditions for Porcupine Caribou and Tourism
G05S005	GLWB	Daazraii Investments Inc.	S. Soil Testing (geotechnical)	Willow River quarrying area	Porcupine Caribou Special Management Zone	RA conditions must include conditions for Porcupine Caribou
G05S006	GLWB	Geological Survey of Canada	S. Soil Testing (geotechnical)	South-East of Travaillant Lake	Lakes Around Travaillant Lake Special Management Zone	RA conditions must include Plan conditions for Fish and Heritage

File Number	Regulatory Authority	Applicant	Operation	Location	Plan Zones	Comments
G05S007	GLWB	Department of Transportation - GNWT	S. Soil Testing (geotechnical)	Dempster, km 34	Transportation Special Management Zone	RA conditions must include conditions for Porcupine Caribou and Tourism
G05X008	GLWB	DOT - GNWT	X. Miscellaneous	Dempster, km 24	Transportation Special Management Zone	RA conditions must include conditions for Porcupine Caribou and Tourism
G00Q008	GLWB	DOT - GNWT	Q. Quarrying	Dempster, Km 23.5	Transportation Special Management Zone	Permit Renewal - grandfathered
G00Q008-b	GLWB	DOT – GNWT	Q. Quarrying	Dempster, Km 28.9	Transportation Special Management Zone	Permit Renewal - grandfathered
G00Q008-c	GLWB	DOT – GNWT	Q. Quarrying	Dempster, Km 141	Transportation Special Management Zone	Permit Renewal - grandfathered
G00Q008-d	GLWB	DOT – GNWT	Q. Quarrying	Dempster, Km 166.4	Transportation Special Management Zone	Permit Renewal - grandfathered
G00Q008-e	GLWB	DOT – GNWT	Q. Quarrying	Dempster, Km 178.2	Transportation Special Management Zone	Permit Renewal - grandfathered
G00Q008-f	GLWB	DOT – GNWT	Q. Quarrying	Dempster, Km 193.7	Transportation Special Management Zone	Permit Renewal - grandfathered
G00Q008-g	GLWB	DOT – GNWT	Q. Quarrying	Dempster, Km 211.2	Transportation Special Management Zone	Permit Renewal - grandfathered
G00Q008-h	GLWB	DOT – GNWT	Q. Quarrying	Dempster, Km 230.2	Transportation Special Management Zone	Permit Renewal - grandfathered
G00Q008-i	GLWB	DOT – GNWT	Q. Quarrying	Dempster, Km 235.3	Transportation Special Management Zone	Permit Renewal - grandfathered
G00Q008-j	GLWB	DOT – GNWT	Q. Quarrying	Dempster, Km 251.2	Transportation Special Management Zone	Permit Renewal - grandfathered
G00Q008-k	GLWB	DOT – GNWT	Q. Quarrying	Tsiigehtchic Pit	Tsiigehtshik (Mouth of the Arctic Red River) Special Management Zone	Permit Renewal - grandfathered
G99L3-004	GLWB	Charter Community of Tsiigehtchic	L3. Municipal undertaking	Charter community of Tsiigehtchic	Municipal Lands	Plan does not apply
G01H010	GLWB	Trans North Helicopters	H. Fuel Storage Sites	75 kilometres east of Tsiigehtchic - south bank of the Mackenzie River.	Travaillant Lake Conservation Zone	Permit Renewal - grandfathered

Locations of Land Use Permits and Water Licences Issued in 2005-06 in the Gwich'in Settlement Area



Financial Statements for 2005-2006

Gwich'in Land Use Planning Board

Financial Statements

March 31, 2006

Gwich'in Land Use Planning Board

Financial Statements

Year ended March 31, 2006

Auditor's Report

Statement of Financial Position	4
Statement of Revenues and Expenditures by Program	5
Statement of Revenues and Expenditures	6
Statement of Changes in Net Assets	7
Statement of Cash Flows	8

Notes to Financial Statements	9 - 10
-------------------------------	--------

Schedule 1 - General Activities	11
Schedule 2 - Arctic Red River Headwaters Project	12
Schedule 3 - Campbell Hills Creek Study Project	13
Schedule 4 - Cultural Assessment	14
Schedule 5 - Granular Resources Management Project	15
Schedule 6 - Plan Implementation Monitoring (Legal Review)	16
Schedule 7 - Mackenzie Gas Project Review	17
Schedule 8 - Richardson Mountains / Peel River Project	18
Schedule 9 - Special Management Zone Project	19
Schedule 10 - Travaillant / Thunder River Project	20
Schedule 11 - Youth Involvement Project	21
Schedule 12 - Youth Book Project	22

CHARLES JEFFERY

Chartered Accountant

Suite 118 • 314 Old Airport Road, Yellowknife NT X1A 3T3
Phone: 867.920.4722 | Fax: 867.873.5502
Info@cjeffery.com

Auditors' Report

**To the Board of Directors of
the Gwich'in Land Use Planning Board.**

I have examined the statement of financial position of the Gwich'in Land Use Planning Board as at March 31, 2006 and the statements of revenues and expenditures, changes in net assets, and cash flows for the year then ended. These financial statements are the responsibility of the organization's management. My responsibility is to express an opinion on these financial statements based on my audit.

I conducted my audit in accordance with Canadian generally accepted auditing standards. Those standards require that I plan and perform an audit to obtain reasonable assurance whether the financial statements are free of material misstatement. An audit includes examining, on a test basis, evidence supporting the amounts and disclosures in the financial statements. An audit also includes assessing the accounting principles used and significant estimates made by management, as well as evaluating the overall financial statement presentation.

In my opinion, these financial statements present fairly, in all material respects, the financial position of the organization at March 31, 2006 and the results of its operations for the year then ended in accordance with Canadian generally accepted accounting principles.

Yellowknife, Northwest Territories
May 5, 2006



Charles Jeffery
Chartered Accountant

Gwich'in Land Use Planning Board

Statement of Financial Position

As at March 31,	2006	2005
	\$	\$
Assets		
Current		
Cash	66,869	147,987
Contributions receivable	5,326	45,900
Payroll remittances recoverable	2,563	1,295
Goods and Services Tax recoverable	11,478	6,153
	86,236	201,335
Capital assets (Note 2)	5,978	6,311
	92,214	207,646
Liabilities		
Current		
Accounts payable and accrued liabilities	36,738	140,849
Unexpended program funding (Note 1c)	-	29,519
	36,738	170,368
Net assets		
Investment in capital assets	5,978	6,311
Training funds	23,483	21,993
Unrestricted net assets	26,015	8,974
	55,476	37,278
	92,214	207,646

Approved by the Board:

_____, Director

_____, Director

Gwich'in Land Use Planning Board

Statement of Revenues and Expenditures by Program

For the year ended March 31,	2006	2005
	\$	\$
Revenues		
General activities	243,339	182,423
Arctic Red River Headwaters Project	55,264	23,725
Campbell Hills Creek Study Project	-	31,000
Cultural Assessment	-	4,140
Granular Resources Management Project	4,836	-
Plan Implementation Monitoring (Legal Review)	-	5,000
Mackenzie Gas Project Review	-	44,150
Richardson Mountains / Peel River Project	9,500	-
Special Management Zone Conditions Review	-	15,555
Travaillant / Thunder River Project	-	32,448
Youth Involvement Project	7,369	10,410
Youth Book Project	3,987	-
	324,295	348,851
Expenditures		
General activities	225,400	217,779
Arctic Red River Headwaters Project	55,284	21,195
Campbell Hills Creek Study Project	5,109	23,763
Cultural Assessment	-	4,140
Granular Resources Management Project	4,836	-
Plan Implementation Monitoring (Legal Review)	270	2,002
Mackenzie Gas Project Review	13,725	28,680
Richardson Mountains / Peel River Project	9,087	-
Special Management Zone Conditions Review	-	14,720
Travaillant / Thunder River Project	-	32,448
Youth Involvement Project	10,348	7,431
Youth Book Project	3,987	-
	328,046	352,158
Excess revenues (expenditures) in operations	(3,751)	(3,307)
Costs to complete projects in process	-	(29,519)
Revenues used to complete projects in process	29,519	-
Contributions repaid	(7,237)	-
Excess revenues (expenditures)	18,531	(32,826)

Gwich'in Land Use Planning Board

Statement of Revenues and Expenditures

For the year ended March 31,	2006	2005
	\$	\$
Revenues		
Government of Canada		
Department of Indian and Northern Affairs - Core funding	261,041	255,482
Department of Indian and Northern Affairs - Protected areas	53,264	43,000
Canadian Wildlife Service	-	26,000
Government of the Northwest Territories - Protected Areas	-	21,000
Ducks Unlimited Canada	8,500	2,000
Interest	1,490	1,191
Miscellaneous	-	178
	324,295	348,851
Expenditures		
Bank charges and interest	597	635
Board meetings	31,178	34,157
Community meetings	13,996	10,875
Consultants	46,128	31,983
Coordination	600	1,950
Government meetings	4,902	9,354
Industry meetings	3,682	3,310
Mapping and production of reports	15,801	312
Office supplies	7,568	7,455
Professional fees	7,287	13,356
Rent	10,021	13,349
Research and data collection	60,120	115,301
Staff hiring and training	3,972	5,290
Staff travel	-	552
Telephone	1,339	2,168
Wages and benefits	120,855	102,111
	328,046	352,158
Excess revenues (expenditures) in operations	(3,751)	(3,307)
Costs to complete projects in process	-	(29,519)
Revenues used to complete projects in process	29,519	-
Contributions repaid	(7,237)	-
Excess revenues (expenditures)	18,531	(32,826)

Gwich'in Land Use Planning Board

Statement of Changes in Net Assets

For the year ended March 31,	2006	2005
	\$	\$
Invested in capital assets		
Balance, beginning of the year	6,311	8,744
Capital assets acquired - charged to operations	1,599	-
	7,910	8,744
Amortization of Capital Assets	(1,932)	(2,433)
Balance, end of the year	5,978	6,311
Training funds		
Balance, beginning of the year	21,993	20,802
Interest earned on operating bank balance	1,490	1,191
	23,483	21,993
Expended on approved projects	-	-
Balance, end of the year	23,483	21,993
Unrestricted net assets		
Balance, beginning of the year	8,974	42,991
Excess revenues (expenditures)	18,531	(32,826)
	27,505	10,165
Interest earned appropriated for training funds	(1,490)	(1,191)
Balance, end of the year	26,015	8,974

Gwich'in Land Use Planning Board

Statement of Cash Flows

For the year ended March 31,	2006	2005
	\$	\$
Cash provided by (used in)		
Operating activities		
Excess revenues (expenditures)	18,531	(32,826)
Add charges, deduct credits within operations which do not involve cash or which are investing activities		
Capital asset purchases charged to operations	1,599	-
Net change in non-cash working capital balances (Note 3)	(99,649)	86,761
Net cash provided by (used in) operations	(79,519)	53,935
Investing activities		
Purchase of computer hardware	(639)	-
Purchase of office equipment	(960)	-
Net cash provided by (used in) investing activities	(1,599)	-
Financing activities		
Repayment of unearned contribution	-	(10,000)
Net cash provided by (used in) financing activities	-	(10,000)
Increase (decrease) in cash position	(81,118)	43,935
Cash position at beginning of the year	147,987	104,052
Cash position at end of the year	66,869	147,987

Gwich'in Land Use Planning Board

Notes to Financial Statements

For the year ended March 31, 2006

The Gwich'in Land Use Planning Board (the "Board") was created upon the enactment of the Mackenzie Valley Resource Management Act on December 22, 1998.

The objective of the Board is to conduct land use planning in the Gwich'in Settlement Area. The Board's activities are based on the plan developed by the Mackenzie Delta - Beaufort Sea Regional Land Use Planning Commission. The Board's activities are in accordance with the Basis of Agreement for Land Use Planning in the Northwest Territories - July 28, 1983.

The Board is a not-for-profit organization and is exempt from income tax under Section 149 of the Income Tax Act.

1 Significant accounting policies

These financial statements have been prepared in accordance with Canadian generally accepted accounting principles. The preparation of financial statements necessarily involves the use of estimates, which have been made using careful judgment. Actual results could differ from these estimates and any differences will be reflected in the financial statements in the period in which they are known. The financial statements have, in the opinion of management, been properly prepared within the reasonable limits of materiality and the framework of the significant accounting policies summarized below.

(a) Fund accounting

Revenue and expenses relating to the operation of the Board are reported in the unrestricted net assets fund.

Investment in capital assets report the net book value of the capital assets.

Training funds are restricted for training initiatives. Interest income is accumulated for this purpose.

(b) Capital assets

Capital assets are recorded at cost less accumulated amortization. Assets acquired are charged to operations. Amortization is provided to reduce the investment account over the expected useful lives of the capital assets. Amortization is recorded using the diminishing balance method at the following rates:

Computer hardware	30%
Computer software	100%
Display equipment	20%
Office equipment	20%

(c) Unexpended program funding

The Contribution Agreement between The Gwich'in Land Use Planning Board and the Department of Indian and Northern Affairs is defined by the department to be a Flexible Transfer Payment (FTP). Under the conditions of a FTP, a recipient may retain the unexpended balance of funds provided that the recipient has met its commitments under the contribution agreement and provided that the unexpended balances are to be applied toward the planning and completion of the duties and responsibilities assigned to the recipient. Duties assigned and responsibilities are designated by defined actions and budget items demonstrably in process at the end of any fiscal period.

(d) Financial instruments

Financial instruments consist of cash, accounts receivable, temporary investments, and accounts payable. These financial instruments might expose the Board to interest rate and credit risks. In the opinion of management, the financial statements and accompanying notes contain the relevant information to reasonably assess these risks.

Gwich'in Land Use Planning Board

Notes to Financial Statements

For the year ended March 31,			2006	2005
			\$	\$
2 Capital assets				
	Cost	Accumulated Amortization	Net Book Value	Net Book Value
Computer hardware	43,582	39,690	3,892	4,784
Computer software	5,464	5,464	-	-
Display equipment	2,999	2,677	322	403
Office equipment	6,890	5,126	1,764	1,124
	58,935	52,957	5,978	6,311
3 Net change in non-cash working capital balances				
Operating resources provided by:				
Reduction in contributions receivable			40,574	-
Increase in accounts payable and accrued liabilities			-	108,155
Increase in unexpended program funding			-	29,519
			40,574	137,674
Operating resources applied to:				
Increase in contributions receivable			-	(45,900)
Increase in payroll remittances recoverable			(1,268)	(1,295)
Increase in Goods and Services Tax recoverable			(5,325)	(3,718)
Reduction in accounts payable and accrued liabilities			(104,111)	-
Reduction in unexpended program funding			(29,519)	-
			(140,223)	(50,913)
			(99,649)	86,761

Gwich'in Land Use Planning Board

Statement of Revenue and Expenditures - General Activities

For the year ended March 31,	2006	2005
	\$	\$
Revenues		
Government of Canada		
Department of Indian and Northern Affairs - Core funding	241,849	181,054
Department of Indian and Northern Affairs - Protected areas	-	-
Canadian Wildlife Service	-	-
Government of the Northwest Territories - Protected Areas	-	-
Ducks Unlimited Canada	-	-
Interest	1,490	1,191
Miscellaneous	-	178
	243,339	182,423
Expenditures		
Bank charges and interest	597	635
Board meetings	31,178	34,157
Community meetings	9,784	10,875
Consultants	19,469	2,330
Coordination	600	1,950
Government meetings	4,902	9,354
Industry meetings	3,682	3,310
Mapping and production of reports	4,445	312
Office supplies	7,539	7,455
Professional fees	7,017	11,356
Rent	10,021	13,349
Research and data collection	-	12,575
Staff hiring and training	3,972	5,290
Staff travel	-	552
Telephone	1,339	2,168
Wages and benefits	120,855	102,111
	225,400	217,779
Excess revenues (expenditures) in operations	17,939	(35,356)
Costs to complete projects in process	-	-
Revenues used to complete projects in process	-	-
Contributions repaid	-	-
Excess revenues (expenditures)	17,939	(35,356)

Gwich'in Land Use Planning Board

Statement of Revenue and Expenditures - Arctic Red River Headwaters Project

For the year ended March 31,	2006	2005
	\$	\$
Revenue		
Government of Canada		
Department of Indian and Northern Affairs - Core funding	2,000	2,725
Department of Indian and Northern Affairs - Protected areas	53,264	-
Canadian Wildlife Service	-	-
Government of the Northwest Territories - Protected Areas	-	21,000
Ducks Unlimited Canada	-	-
Interest	-	-
Miscellaneous	-	-
	55,264	23,725
Expenditures		
Bank charges and interest	-	-
Board meetings	-	-
Community meetings	-	-
Consultants	-	7,501
Coordination	-	-
Government meetings	-	-
Industry meetings	-	-
Mapping and production of reports	-	-
Office supplies	-	-
Professional fees	-	-
Rent	-	-
Research and data collection	55,284	13,694
Staff hiring and training	-	-
Staff travel	-	-
Telephone	-	-
Wages and benefits	-	-
	55,284	21,195
Excess revenues (expenditures) in operations	(20)	2,530
Costs to complete projects in process	-	-
Revenues used to complete projects in process	-	-
Contributions repaid	-	-
Excess revenues (expenditures)	(20)	2,530

Gwich'in Land Use Planning Board

Statement of Revenue and Expenditures - Campbell Hills Creek Study Project

For the year ended March 31,	2006	2005
	\$	\$
Revenue		
Government of Canada		
Department of Indian and Northern Affairs - Core funding	-	-
Department of Indian and Northern Affairs - Protected areas	-	31,000
Canadian Wildlife Service	-	-
Government of the Northwest Territories - Protected Areas	-	-
Ducks Unlimited Canada	-	-
Interest	-	-
Miscellaneous	-	-
	-	31,000
Expenditures		
Bank charges and interest	-	-
Board meetings	-	-
Community meetings	-	-
Consultants	5,109	-
Coordination	-	-
Government meetings	-	-
Industry meetings	-	-
Mapping and production of reports	-	-
Office supplies	-	-
Professional fees	-	-
Rent	-	-
Research and data collection	-	23,763
Staff hiring and training	-	-
Staff travel	-	-
Telephone	-	-
Wages and benefits	-	-
	5,109	23,763
Excess revenues (expenditures) in operations	(5,109)	7,237
Costs to complete projects in process	-	(7,237)
Revenues used to complete projects in process	7,237	-
Contributions repaid	(6,600)	-
Excess revenues (expenditures)	(4,472)	-

Gwich'in Land Use Planning Board

Statement of Revenue and Expenditures - Cultural Assessment

For the year ended March 31,	2006	2005
	\$	\$
Revenue		
Government of Canada		
Department of Indian and Northern Affairs - Core funding	-	4,140
Department of Indian and Northern Affairs - Protected areas	-	-
Canadian Wildlife Service	-	-
Government of the Northwest Territories - Protected Areas	-	-
Ducks Unlimited Canada	-	-
Interest	-	-
Miscellaneous	-	-
	-	4,140
Expenditures		
Bank charges and interest	-	-
Board meetings	-	-
Community meetings	-	-
Consultants	-	-
Coordination	-	-
Government meetings	-	-
Industry meetings	-	-
Mapping and production of reports	-	-
Office supplies	-	-
Professional fees	-	-
Rent	-	-
Research and data collection	-	4,140
Staff hiring and training	-	-
Staff travel	-	-
Telephone	-	-
Wages and benefits	-	-
	-	4,140
Excess revenues (expenditures) in operations	-	-
Costs to complete projects in process	-	-
Revenues used to complete projects in process	-	-
Contributions repaid	-	-
Excess revenues (expenditures)	-	-

Gwich'in Land Use Planning Board

Statement of Revenue and Expenditures - Granular Resources Management Project

For the year ended March 31,	2006	2005
	\$	\$
Revenue		
Government of Canada		
Department of Indian and Northern Affairs - Core funding	4,836	-
Department of Indian and Northern Affairs - Protected areas	-	-
Canadian Wildlife Service	-	-
Government of the Northwest Territories - Protected Areas	-	-
Ducks Unlimited Canada	-	-
Interest	-	-
Miscellaneous	-	-
	4,836	-
Expenditures		
Bank charges and interest	-	-
Board meetings	-	-
Community meetings	-	-
Consultants	-	-
Coordination	-	-
Government meetings	-	-
Industry meetings	-	-
Mapping and production of reports	-	-
Office supplies	-	-
Professional fees	-	-
Rent	-	-
Research and data collection	4,836	-
Staff hiring and training	-	-
Staff travel	-	-
Telephone	-	-
Wages and benefits	-	-
	4,836	-
Excess revenues (expenditures) in operations	-	-
Costs to complete projects in process	-	-
Revenues used to complete projects in process	-	-
Contributions repaid	-	-
Excess revenues (expenditures)	-	-

Gwich'in Land Use Planning Board

Statement of Revenue and Expenditures - Plan Implementation (Legal Review)

For the year ended March 31,	2006	2005
	\$	\$
Revenue		
Government of Canada		
Department of Indian and Northern Affairs - Core funding	-	5,000
Department of Indian and Northern Affairs - Protected areas	-	-
Canadian Wildlife Service	-	-
Government of the Northwest Territories - Protected Areas	-	-
Ducks Unlimited Canada	-	-
Interest	-	-
Miscellaneous	-	-
	-	5,000
Expenditures		
Bank charges and interest	-	-
Board meetings	-	-
Community meetings	-	-
Consultants	-	-
Coordination	-	-
Government meetings	-	-
Industry meetings	-	-
Mapping and production of reports	-	-
Office supplies	-	-
Professional fees	270	2,002
Rent	-	-
Research and data collection	-	-
Staff hiring and training	-	-
Staff travel	-	-
Telephone	-	-
Wages and benefits	-	-
	270	2,002
Excess revenues (expenditures) in operations	(270)	2,998
Costs to complete projects in process	-	(2,998)
Revenues used to complete projects in process	2,998	-
Contributions repaid	-	-
Excess revenues (expenditures)	2,728	-

Gwich'in Land Use Planning Board

Statement of Revenue and Expenditures - Mackenzie Gas Project Review

For the year ended March 31,	2006	2005
	\$	\$
Revenue		
Government of Canada		
Department of Indian and Northern Affairs - Core funding	-	44,150
Department of Indian and Northern Affairs - Protected areas	-	-
Canadian Wildlife Service	-	-
Government of the Northwest Territories - Protected Areas	-	-
Ducks Unlimited Canada	-	-
Interest	-	-
Miscellaneous	-	-
	-	44,150
Expenditures		
Bank charges and interest	-	-
Board meetings	-	-
Community meetings	-	-
Consultants	13,725	-
Coordination	-	-
Government meetings	-	-
Industry meetings	-	-
Mapping and production of reports	-	-
Office supplies	-	-
Professional fees	-	-
Rent	-	-
Research and data collection	-	28,680
Staff hiring and training	-	-
Staff travel	-	-
Telephone	-	-
Wages and benefits	-	-
	13,725	28,680
Excess revenues (expenditures) in operations	(13,725)	15,470
Costs to complete projects in process	-	(15,470)
Revenues used to complete projects in process	15,470	-
Contributions repaid	-	-
Excess revenues (expenditures)	1,745	-

Gwich'in Land Use Planning Board

Statement of Revenue and Expenditures - Richardson Mountains / Peel River Project

For the year ended March 31,	2006	2005
	\$	\$
Revenue		
Government of Canada		
Department of Indian and Northern Affairs - Core funding	1,000	-
Department of Indian and Northern Affairs - Protected areas	-	-
Canadian Wildlife Service	-	-
Government of the Northwest Territories - Protected Areas	-	-
Ducks Unlimited Canada	8,500	-
Interest	-	-
Miscellaneous	-	-
	9,500	-
Expenditures		
Bank charges and interest	-	-
Board meetings	-	-
Community meetings	4,212	-
Consultants	-	-
Coordination	-	-
Government meetings	-	-
Industry meetings	-	-
Mapping and production of reports	4,875	-
Office supplies	-	-
Professional fees	-	-
Rent	-	-
Research and data collection	-	-
Staff hiring and training	-	-
Staff travel	-	-
Telephone	-	-
Wages and benefits	-	-
	9,087	-
Excess revenues (expenditures) in operations	413	-
Costs to complete projects in process	-	-
Revenues used to complete projects in process	-	-
Contributions repaid	-	-
Excess revenues (expenditures)	413	-

Gwich'in Land Use Planning Board

Statement of Revenue and Expenditures - Special Management Zone Project

For the year ended March 31,	2006	2005
	\$	\$
Revenue		
Government of Canada		
Department of Indian and Northern Affairs - Core funding	-	3,555
Department of Indian and Northern Affairs - Protected areas	-	12,000
Canadian Wildlife Service	-	-
Government of the Northwest Territories - Protected Areas	-	-
Ducks Unlimited Canada	-	-
Interest	-	-
Miscellaneous	-	-
	-	15,555
Expenditures		
Bank charges and interest	-	-
Board meetings	-	-
Community meetings	-	-
Consultants	-	14,720
Coordination	-	-
Government meetings	-	-
Industry meetings	-	-
Mapping and production of reports	-	-
Office supplies	-	-
Professional fees	-	-
Rent	-	-
Research and data collection	-	-
Staff hiring and training	-	-
Staff travel	-	-
Telephone	-	-
Wages and benefits	-	-
	-	14,720
Excess revenues (expenditures) in operations	-	835
Costs to complete projects in process	-	(835)
Revenues used to complete projects in process	835	-
Contributions repaid	(637)	-
Excess revenues (expenditures)	198	-

Gwich'in Land Use Planning Board

Statement of Revenue and Expenditures - Travaillant Lake / Thunder River Project

For the year ended March 31,	2006	2005
	\$	\$
Revenue		
Government of Canada		
Department of Indian and Northern Affairs - Core funding	-	4,448
Department of Indian and Northern Affairs - Protected areas	-	-
Canadian Wildlife Service	-	26,000
Government of the Northwest Territories - Protected Areas	-	-
Ducks Unlimited Canada	-	2,000
Interest	-	-
Miscellaneous	-	-
	-	32,448
Expenditures		
Bank charges and interest	-	-
Board meetings	-	-
Community meetings	-	-
Consultants	-	-
Coordination	-	-
Government meetings	-	-
Industry meetings	-	-
Mapping and production of reports	-	-
Office supplies	-	-
Professional fees	-	-
Rent	-	-
Research and data collection	-	32,448
Staff hiring and training	-	-
Staff travel	-	-
Telephone	-	-
Wages and benefits	-	-
	-	32,448
Excess revenues (expenditures) in operations	-	-
Costs to complete projects in process	-	-
Revenues used to complete projects in process	-	-
Contributions repaid	-	-
Excess revenues (expenditures)	-	-

Gwich'in Land Use Planning Board

Statement of Revenue and Expenditures - Youth Involvement Project

For the year ended March 31,	2006	2005
	\$	\$
Revenue		
Government of Canada		
Department of Indian and Northern Affairs - Core funding	7,369	10,410
Department of Indian and Northern Affairs - Protected areas	-	-
Canadian Wildlife Service	-	-
Government of the Northwest Territories - Protected Areas	-	-
Ducks Unlimited Canada	-	-
Interest	-	-
Miscellaneous	-	-
	7,369	10,410
Expenditures		
Bank charges and interest	-	-
Board meetings	-	-
Community meetings	-	-
Consultants	7,825	-
Coordination	-	-
Government meetings	-	-
Industry meetings	-	-
Mapping and production of reports	2,494	-
Office supplies	29	-
Professional fees	-	-
Rent	-	-
Research and data collection	-	7,431
Staff hiring and training	-	-
Staff travel	-	-
Telephone	-	-
Wages and benefits	-	-
	10,348	7,431
Excess revenues (expenditures) in operations	(2,979)	2,979
Costs to complete projects in process	-	(2,979)
Revenues used to complete projects in process	2,979	-
Contributions repaid	-	-
Excess revenues (expenditures)	-	-

Gwich'in Land Use Planning Board

Statement of Revenue and Expenditures - Youth Book

For the year ended March 31,	2006	2005
	\$	\$
Revenue		
Government of Canada		
Department of Indian and Northern Affairs - Core funding	3,987	-
Department of Indian and Northern Affairs - Protected areas	-	-
Canadian Wildlife Service	-	-
Government of the Northwest Territories - Protected Areas	-	-
Ducks Unlimited Canada	-	-
Interest	-	-
Miscellaneous	-	-
	3,987	-
Expenditures		
Bank charges and interest	-	-
Board meetings	-	-
Community meetings	-	-
Consultants	-	-
Coordination	-	-
Government meetings	-	-
Industry meetings	-	-
Mapping and production of reports	3,987	-
Office supplies	-	-
Professional fees	-	-
Rent	-	-
Research and data collection	-	-
Staff hiring and training	-	-
Staff travel	-	-
Telephone	-	-
Wages and benefits	-	-
	3,987	-
Excess revenues (expenditures) in operations	-	-
Costs to complete projects in process	-	-
Revenues used to complete projects in process	-	-
Contributions repaid	-	-
Excess revenues (expenditures)	-	-